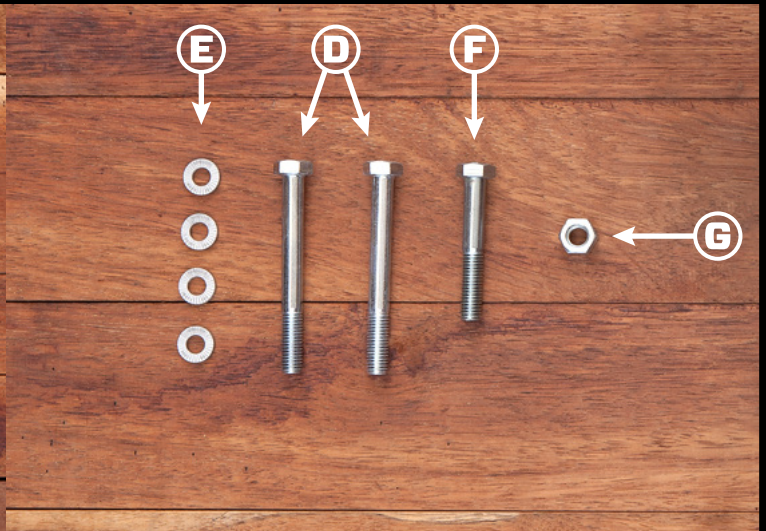
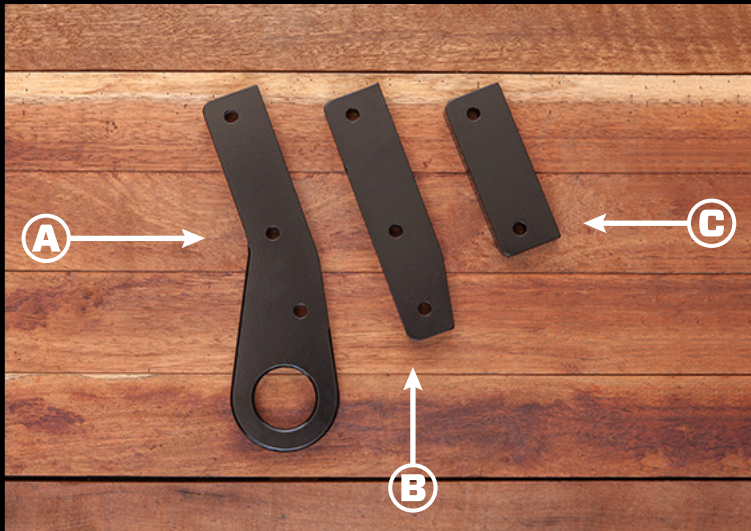


WK2 Recovery Point (front)

Installation Instructions



| REF | QTY | DESCRIPTION |
|-----|-----|---|
| A | 1 | Recovery Point |
| B | 1 | Middle Mounting Plate |
| C | 1 | Top Mounting Plate |
| D | 2 | M10 x 90mm 10.9 Bolts (Zinc) |
| E | 4 | M10 Nord-Lock® Extended Washers (NL-10sp) |
| F | 1 | M10 x 65mm 10.9 Bolt (Zinc) |
| G | 1 | M10 CL10 Nut (Zinc) |

| REF | QTY | DESCRIPTION |
|-----|-----|-------------------------|
| | 1 | 4g Anti-Seize Pouch |
| | 1 | Chief Products Shop Rag |

REQUIRED TOOLS

- Ratchet
- 21mm Socket
- 16mm Socket
- 16mm Wrench

NOTES

- Do not over-tighten fasteners.
- Photos are representative only, they may show prototype parts and be taken from multiple vehicles.

IMPORTANT

- PROPER INSTALLATION IS ESSENTIAL TO THE PERFORMANCE OF THIS PRODUCT.
- ONLY INSTALL THIS PRODUCT ON A 2011-2016 JEEP GRAND CHEROKEE.
- ONLY USE THE PROVIDED HARDWARE FOR INSTALLATION.
- DO NOT MODIFY THE STRUCTURE OF THIS PRODUCT IN ANY WAY.
- CHECK PRODUCT REGULARLY FOR DAMAGE. REPLACE IMMEDIATELY AT FIRST SIGN OF DAMAGE.
- CHECK FASTENER TIGHTNESS REGULARLY AND TIGHTEN IF REQUIRED.

1

Remove 'Lower Front Fascia'.

1. Refer to the Owners Manual for basic instructions.
2. For more detailed instructions we've posted a 'How To' article on our website, (<http://www.chiefproducts.com.au/blogs/how-to/11555201-wk2-lower-front-fascia-removal-installation>)

NOTE

Removal of the 'Lower Front Fascia' is not required, but it can make installation a bit easier, especially on MY11 & MY12 WK2s.



WK2 Recovery Point (front)

Installation Instructions

DRIVER SIDE INSTALLATION (Go To Step 2)
PASSENGER SIDE INSTALLATION (Go To Step 4)

2 Driver Side Installation

Remove OEM Screw-In Hook Threaded Tube.
Remove 21mm bolt on back of bracket. With the bolt removed, slide the threaded tube out of the bracket. You will now have access to the frame mounting bolts.

NOTE

This step is not required for 2013+ WK2s, which have a different bracket, (see Step 3 photo).



3 Driver Side Installation

Remove OEM Screw-In Hook Bracket.

1. Remove (2) M10 bolts holding bracket to frame.

The OEM Screw-In Hook Bracket can now be removed.



4

Prepare for installation.

1. Stack the Top Mounting Plate (C) and Middle Mounting Plate (B) on top of the Recovery Point (A).

NOTE

The Recovery Point (A) should angle towards the centre of the vehicle. All holes should align and the edges of the mounting plates should also align. Make sure all mounting surfaces are clean and free from grease or dirt.



WK2 Recovery Point (front)

Installation Instructions

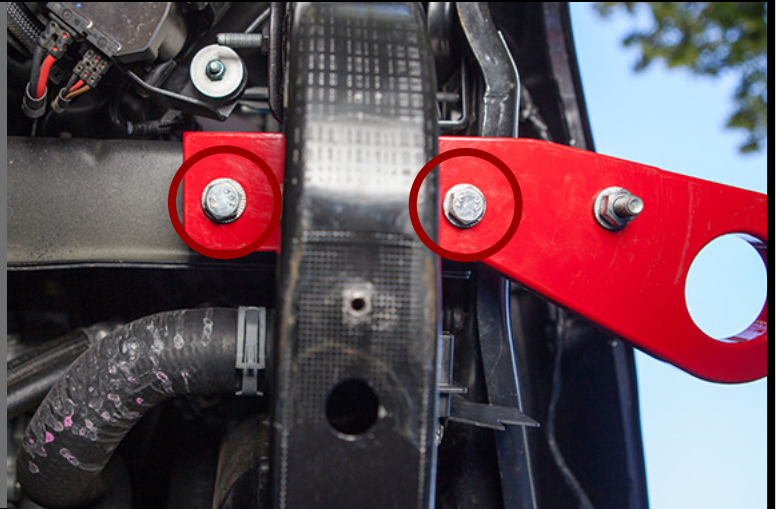
5

Bolt WK2 Recovery Point to frame.

1. Slip 1 x M10 Nord-Lock® SP Washer (E) onto each M10 x 90mm bolt (D). Hold the stack (recovery point and mounting plates from Step 4) up to the frame. Align the mounting holes and insert the 2 x M10 x 90mm bolts with washers through the stack and into the holes in the frame. Tighten.

NOTE

Recommended M10 Bolt Torque = 90Nm (Dry) or 74Nm (Anti-Seize)



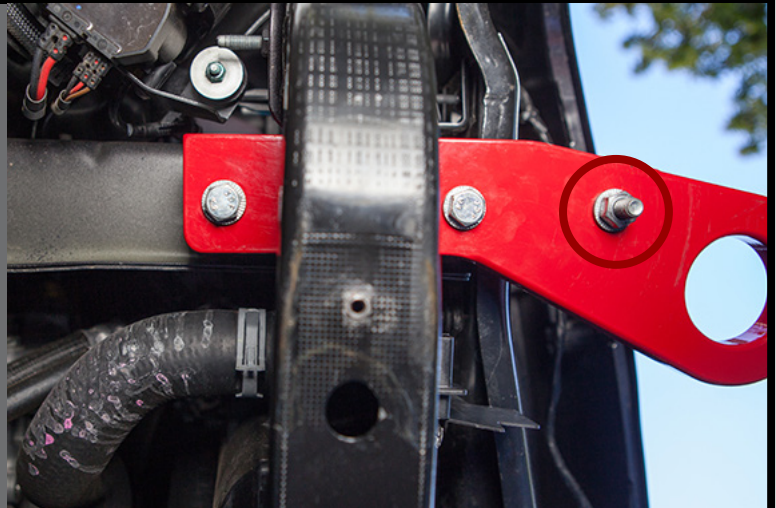
6

Install Strengthening Bolt.

1. Slip 1 x M10 Nord-Lock® SP Washer (E) onto the M10 x 65mm Bolt (F) and slip it down through the forward most hole on the Recovery Point (A) and Middle Mounting Plate (B). Slip 1 x M10 Nord-Lock® SP Washer (E) onto the shaft of the bolt and attach 1 x M10 Nut (G). Tighten.

NOTE

Recommended M10 Bolt Torque = 90Nm (Dry) or 74Nm (Anti-Seize)



7

Re-install 'Lower Front Fascia'.

1. Refer to the Owners Manual for basic instructions.
2. For more detailed instructions we've posted a 'How To' article on our website, (<http://www.chiefproducts.com.au/blogs/how-to/11555201-wk2-lower-front-fascia-removal-installation>)



WK2 Recovery Point is now fully installed.



WK2 Recovery Point (front)

Installation Instructions

Find answers online.

www.chiefproducts.com.au/pages/support

Having troubles? Make sure you've downloaded the most recent version of these instructions from our website. We occasionally make updates.

www.chiefproducts.com.au/installation/wk2-recovery-point.pdf

If you need additional help, send us an email.

support@chiefproducts.com.au